

PM-7500 Series

Gigabit and Fast Ethernet modules for PT-7528-24TX models rackmount Ethernet switches

Specifications

Interface

RJ45 Ports: 10/100/1000BaseT(X) auto negotiation speed, F/H duplex mode, and auto MDI/MDI-X connection

Fiber Ports: 100/1000BaseFX ports (SC/ST or SFP LC connector)

Optical Fiber

Spec Label:

	Multi-mode	Single-mode	Single-mode, 80 km	Multi-mode
Wavelength	1300 nm	1310 nm	1550 nm	1300 nm
Max. TX	-10 dBm	0 dBm	0 dBm	-10 dBm
Min. TX	-20 dBm	-5 dBm	-5 dBm	-20 dBm
RX Sensitivity	-32 dBm	-34 dBm	-34 dBm	-32 dBm
Link Budget	12 dB	29 dB	29 dB	12 dB
Typical Distance	5 km ^a 4 km ^b	40 km ^c	80 km ^d	5 km ^a 4 km ^b
Saturation	-6 dBm	-3 dBm	-3 dBm	-6 dBm

- a. 50/125 μ m, 800 MHz*km fiber optic cable
b. 62.5/125 μ m, 500 MHz*km fiber optic cable
c. 9/125 μ m single-mode fiber optic cable
d. 9/125 μ m single-mode fiber optic cable (80 km)

Ordering Information

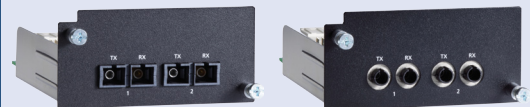
Rackmount Ethernet Switch System and Interface Module Compatibility Chart

Modular Rackmount Ethernet Switch System:

PT-7528-24TX models, slot 1 reserved for installing PM-7500 modules

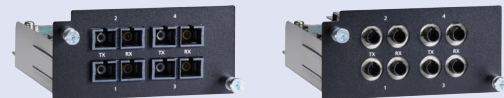


Fast Ethernet Interface Modules, PM-7500 Series



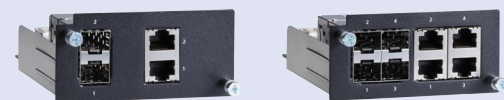
PM-7500-2MSC
PM-7500-2SSC

PM-7500-2MST



PM-7500-4MSC
PM-7500-4SSC

PM-7500-4MST



PM-7500-2GTXSFP

PM-7500-4GTXSFP

Fast Ethernet Modules, PM-7500 Series

Available Models	Port Interface			
	100BaseFX			Combo Port, 10/100/1000BaseT(X) or 100/1000BaseSFP
	Multi-mode, ST Connector	Multi-mode, SC Connector	Single mode, SC Connector	
PM-7500-2MST	2	—	—	—
PM-7500-2MSC	—	2	—	—
PM-7500-2SSC	—	—	2	—
PM-7500-4MST	2	—	—	—
PM-7500-4MSC	—	2	—	—
PM-7500-4SSC	—	—	2	—
PM-7500-2GTXSFP	—	—	—	2
PM-7500-4GTXSFP	—	—	—	4

Package Checklist

- PM-7500 interface modules
- Warranty card