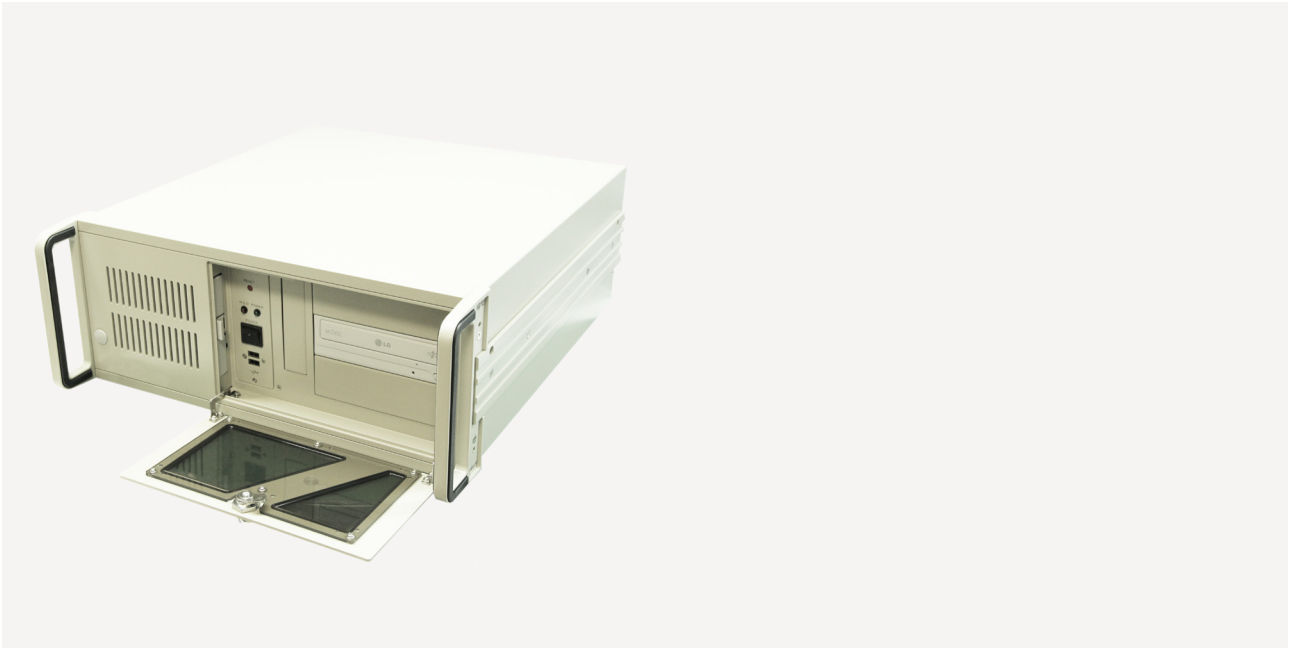


iROBO-40525-23R

Industrial Rackmount Computer



Features

- Rackmount Computer for industrial applications. The systems components is designed for continuous operation (24/7).

Specifications

CPU

- Support Intel® Core™ 6th Generation:
 - Intel® Core™ i7-6700 3.2GHz
 - Intel® Core™ i5-6500 3.2GHz
 - Intel® Core™ i3-6300 3.5GHz
- Support Intel® Xeon™ E3-1200 v5 Serie (need ECC RAM)

Memory

- 4x 288-pin DIMM sockets
- Supports up to 64GB DDR4 2133 unbuffered non-ECC / ECC

Chipset

- Intel® C236

Graphic

- Integrated in CPU Intel® HD Graphics 530
- Video ports: 1x DVI-D, 2x Display port v1.2
- DVI-D: resolution up to 1920x1200 @ 60Hz
- DP: resolution up to 4096x2304 @ 60Hz with Corei3/i5/i7

Ethernet

- Intel® i210AT Gigabit Ethernet Controller
- Intel® i219LM with iAMT11 Gigabit Ethernet Phy

Storage / Drive Bay

- 3x 5.25" open
- 1x 3.5" open / 1x3.5" hidden

SATA / RAID

- 6x SATA 3.0, Intel RAID Matrix Support RAID 0/1/5/10

Expansion Slot

- 1x PCIe x16 Gen3 (el. 16 lanes), 1x PCIe x16 Gen3 (el. 4 lanes)
- 1x PCIe x8 Gen3 (el. 1 lane)
- 1x PCIe x4 Gen3 (el. 1 lane), 1x PCIe x4 Gen3 (el. 4 lane)
- 2x PCI 32bit/33MHz, Rev2.3

Front I/O

- 2x USB2.0

Rear I/O

- 1x DVI-D, 2x DP, 2x RJ45 LAN, 4x USB2.0, 4xUSB3.0
- 1x RS232, Audio, PS/2 KB/M

Other Internal Connectors

- 1x RS232, 1x LPT, 8-bit GPIO, 2x USB3.0, 1x USB 2.0 Stick Slot

Power Supply

- Power input: 100-240VAC 47-64Hz 500W

Cooling

- 1x 120mm, 1x 80mm Cooler

Mechanical

- Heavy Duty Cold Rolled Electroplated Steel
- Mounting: optional slide-rails
- Power / Reset Button in front

Dimensions

- Dimension (W x H x D mm): 483 x 177 x 450 mm
- Weight: 15 kg

Environment

- Operating Temperature: 0°C to 50°C
0°C to 40°C with add-on graphic adapter
- Storage Temperature: -20°C to 70°C
- Humidity: 10 ~ 90%, non-condensing

Certifications

- CE

Ordering Information

iROBO-40525-23R/*