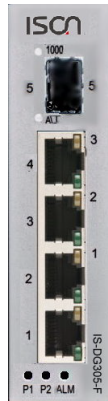


IS-DG305 Series

5 Giga ports unmanaged Layer 2 Industrial Ethernet Switch



ISON IS-DG305 series are full Gigabit unmanaged Ethernet Switches that providing 5 Gigabit ports fulfill easy to use, plug & play applications. A full Gigabit network provides higher throughput than legacy Fast Ethernet network. With easy to use, cost effective unmanaged switch, user can easily use in factory production line or embedded into machine system. Also, IS-DG305 series unmanaged switches supports some useful function by default, such as QoS, storm protection. That can help for the network traffic optimization.



Key Features

- > 5 / 4 Giga Copper ports with 0 / 1 100/1000 SFP ports.
- > Support 9K Jumbo frames
- > IEEE 802.3x flow control & back-pressure
- > Layer 2 wire-speed switching engine
- > Support IEEE 802.1p TOS/Diffserv, QoS by default
- > Multicast / Broadcast / Flooding Storm Control
- > Wide-temperature range (-40~75°C)
- > Redundant power input (12~58 VDC)
- > Reserve power protection
- > Din-Rail or wall mount installation
- > Support Relay Output Alarm
- > IP 30 Protection
- > 2KV surge immunity on RJ45 Copper ports
- > 1.5KV Hipot
- > Rugged Fanless design

Specifications

Ethernet

Operating Mode	Store and Forward, L2 wire-speed/non-blocking switching engine
MAC addresses	8K
Jumbo frames	9K Bytes
Packet Buffer	1 Mbits

Copper RJ45 Ports

Speed	10/100/1000 Mbps Support straight or cross wired cables
MDI/MDIX uto-crossover	10/100/1000 Mbps speed auto-negotiation; Full & Half Duplex
Ethernet isolation	1500 VRMS 1minute(Hipot), 2 KV surge immunity on RJ45 Copper ports.

SFP (pluggable) Ports

Port Types supported	100/1000 Base SFP Slot
Filter port connector	LC/RJ45 connector for fiber ports
Optimal fiber cable	Typical 50 or 62.5/125 μ m for multimode (mm) Typical 8 or 9/125 μ m for single mode (sm)

Features

QoS	IEEE 802.1p, TOS/Diffserv
Number of Queue	4
Storm Protection	Multicast/Broadcast/Flooding Storm Control
Traffic Shaper	Port-Based Port Sharping

Power

Power Input	Redundant Power Input, Terminal Block
Input Voltage Range	12~58 VDC
Reserve power protection	YES
Power Consumption	IS-DG305 3.6 Watt, IS-DG305-F 4.3 Watt

Indicators

Power status indication	Power Input status
Ethernet port indication	Line & speed

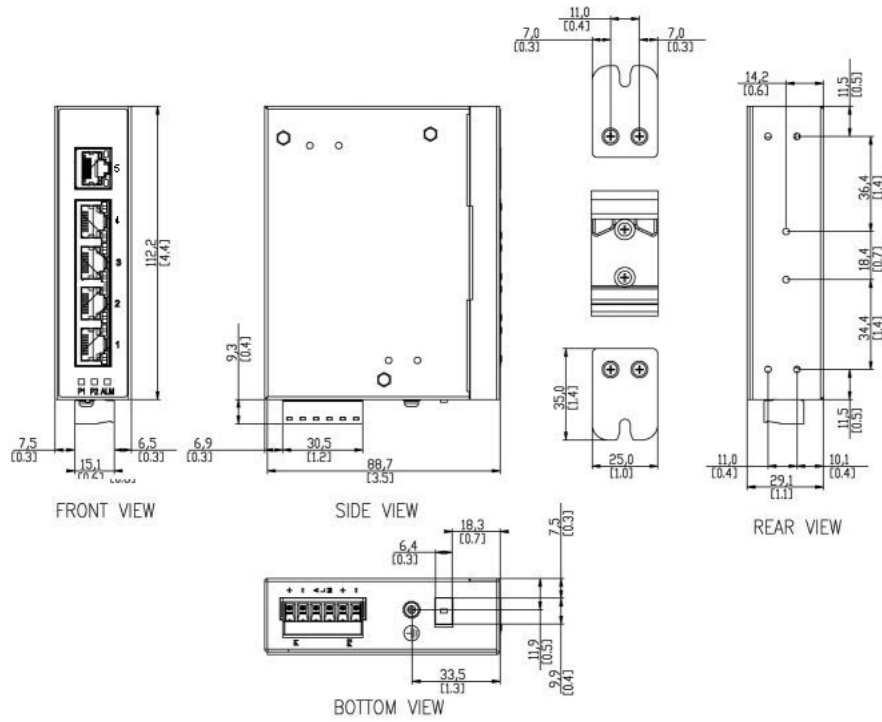
Environmental and Compliances

Operating Temperature	-40~75°C (Cold startup at -40°C)
Storage Temperature	-40~85°C
Humidity	5~95% (Non-Condensing)
Vibration, shock, free fall	IEC-60068-6, -27, -32
Certification Compliance	CE, FCC
Electrical safety	CE
EMC	FCC Part 15, CISPR 22 (EN55022) Class A IEC-61000-4-2, -3, -4, -5, -6 (Level 3)
RoHS & WEEE	RoHS (Pb free) and WEEE Compliant
MTBF	>25 years

Mechanical

Protection	IP30
Dimension	109.2mm(H) x 29.1mm (W) x 89.4mm (D) (without DIN rail kit)
Weight	290g
Installation	DIN-Rail mounting; Wall mounting
Relay Output Alarm	1A, 24VDC, Normal Open

Dimension Diagram



Ordering information

Available Models	Description	Gigabit Ethernet Port	
		10/100/1000BaseT(X)	100/1000BaseSFP
IS-DG305-F	Industrial 5 port Gigabit Layer 2 unmanaged Ethernet Switch,	4	1
IS-DG305	Industrial 5 port Gigabit Layer 2 unmanaged Ethernet Switch	5	

Accessories

- SFP Modules