

GTP-500M Quick Start

This Quick Start will provide information needed to get started with GTP-500M. Please also consult the User Manual for detailed information on the setup and use of GTP-500M.

What's In the Box ?

The package includes the following item:



GTP-500M



Software CD



CA-0910 Cable



Quick Start



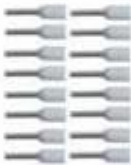
2G/3G Antenna



GPS Antenna



M3x6L Screw * 4



44 mm DIN-Rail Clip * 1 Pin Terminal * 16



Screw Driver



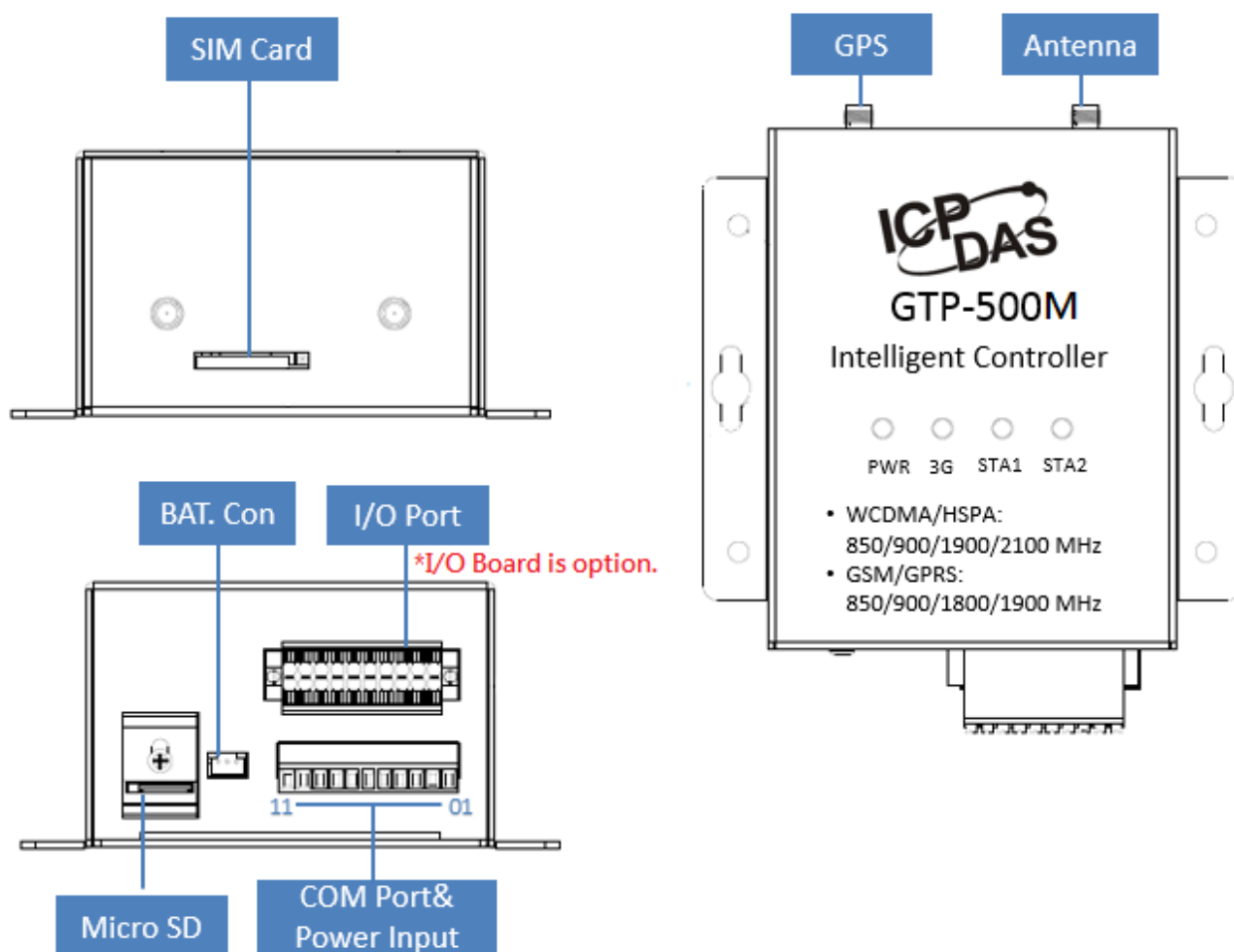
A microSD card and a
micro SD/SD adapter

Technical Support

- **GTP-500M User Manual**
<http://ftp.icpdas.com.tw/pub/cd/usbcd/napdos/gtp-500m/manual/>
- **GTP-500M Website**
<http://m2m.icpdas.com/GTP-500M.html>

Overview

Here is a brief overview of the components and its descriptions for module status.



► LED Indicators

The GTP-500M module has 4 LED indicators. The details are shown as below.



LED Indicator	Color	Meaning
PWR	Red	Power is on
3G	Green	Blinking(3 sec): 3G Mode
		Twinkling twice per 3 sec: GSM Mode
STA1	Green	Reserve
STA2	Orange	Application is running

► microSD Slot

The microSD slot can be used to restore the GTP-500M system, firmware update and expand the memory up to 4 GB.

► I/O Expansion Board

You can choose different expansion I/O board for your requirements. Please refer to the following URL to get more information.

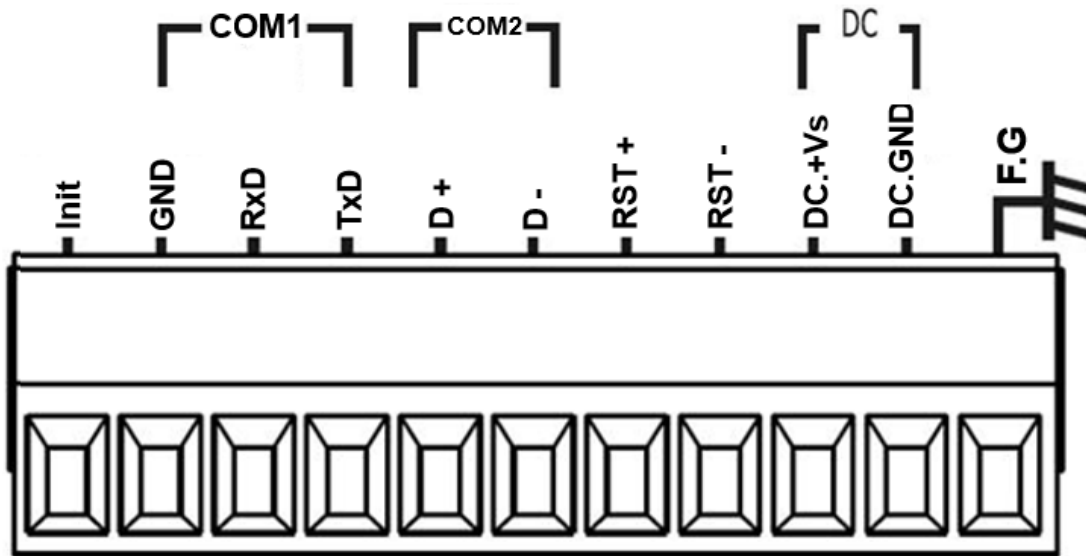
<http://m2m.icpdas.com/GTP-500M.html>

► Battery Connector

GTP-500M support with external power supply, you can use our Battery Box([BX-ENEL5-1](#)) to connect to GTP-500M.

► Pin Assignment

The pin assignments of the GTP-500M connector are as follows:



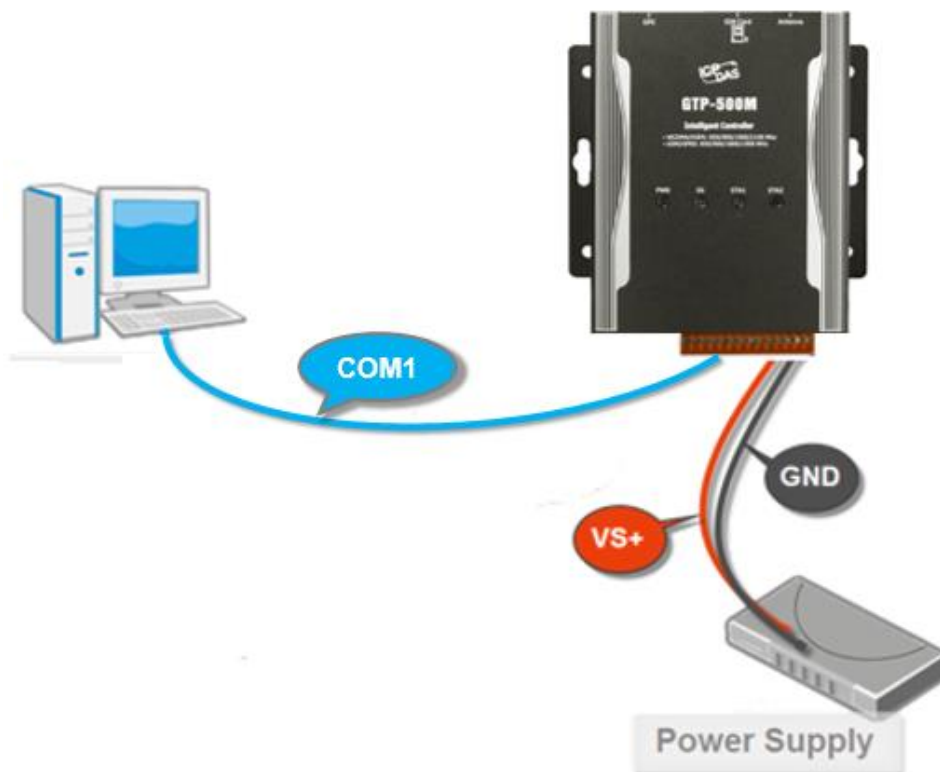
Pin	Name	Description
1	F.G	Frame Ground
2	DC.GND	Power Input
3	DC.+Vs	+10 ~ +30 V _{DC}
4	RST-	Reset
5	RST+	
6	D-	COM2
7	D+	RS-485
8	TxD	COM1
9	RxD	Utility Port
10	GND	RS-232
11	Init	Initial

Let's Start

In the following examples the M2M utility is used. It allowing to set the parameters to the GTP-500M. Please install the SIM card, SD card, 3G antenna and GPS antenna.

► Connecting PC and Power

Please connect Pin.2 and Pin.3 to power supply, and connect Pin.8~10 to PC with RS-232.



► Installing the M2M Utility

It needs the runtime environment with .NET Framework 2.0 or above to execute the M2M Utility in the PC.

Step 1: Get the M2M Utility tool



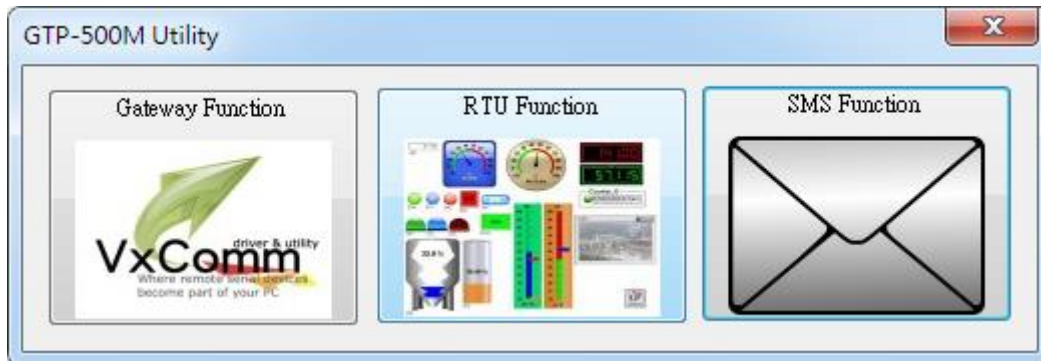
The M2M Utility can be obtained from below link:

<http://ftp.icpdas.com/pub/cd/usbcd/napdos/gtp-500m/software/>

Step 2: Follow the prompts to complete the installation

► How to use M2M Utility

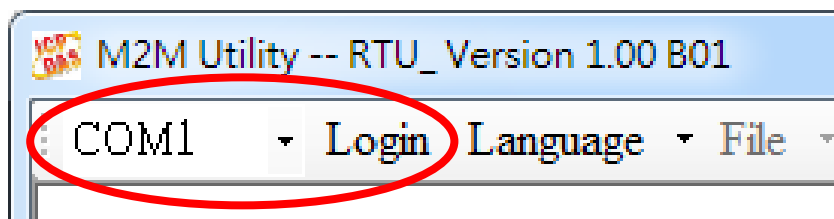
You need to choose the function that GTP-500M is executing(RTU function is default).Now we use RTU function for example.



User Manual: <http://ftp.icpdas.com.tw/pub/cd/usbcd/napdos/gtp-500m/manual/>

Step 1: Login

Choose COM Port and press “Login”.



Step 2: Parameters settings

a. Main Parameters



- Set "Machine ID", "Data Update Period", "Server IP" etc.
- Press "Write to Device" to upload parameters to GTP-500M.

► How to update(change) firmware

If you want to update or change firmware, please follow these steps as following.

Step 1: Power off the GTP-500M and wiring

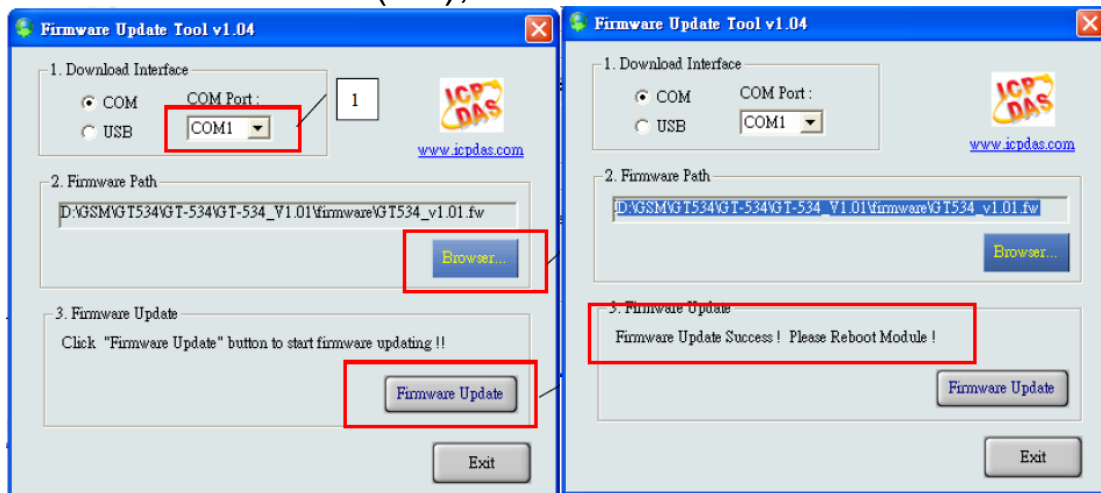
Power off the GTP-500M, then connect Pin.11(Init) to DC.GND.

COM Port & Power Input PIN Assignment		
Terminal No.		Pin Assignment
Frame Ground	01	F.G.
Power Input: 10 ~ 30 V _{DC}	02	DC. GND
	03	DC. +VS
Reset	04	RST-
	05	RST+
COM 2 RS-485	06	D-
	07	D+
COM 1 Utility Port RS-232	08	TxD
	09	RxD
	10	GND
Initial	11	INIT

Reboot the GTP-500M, it will enter to “Firmware update mode”(PWR, STA1 and STA2 LED will turn ON).

Step 2: Execute Firmware Update tool to update firmware

- a. Select COM port.
- b. Select the firmware you want to update/change.
- c. Click “Firmware Update” button. If update success, it will show “Update Success!!”
- d. Disconnect Pin11(Init), and reboot GTP-500M.



► Technical Support

If you have problems about using the GTP-500M, please contact ICPDAS Product Support.

Email: Service@icpdas.com