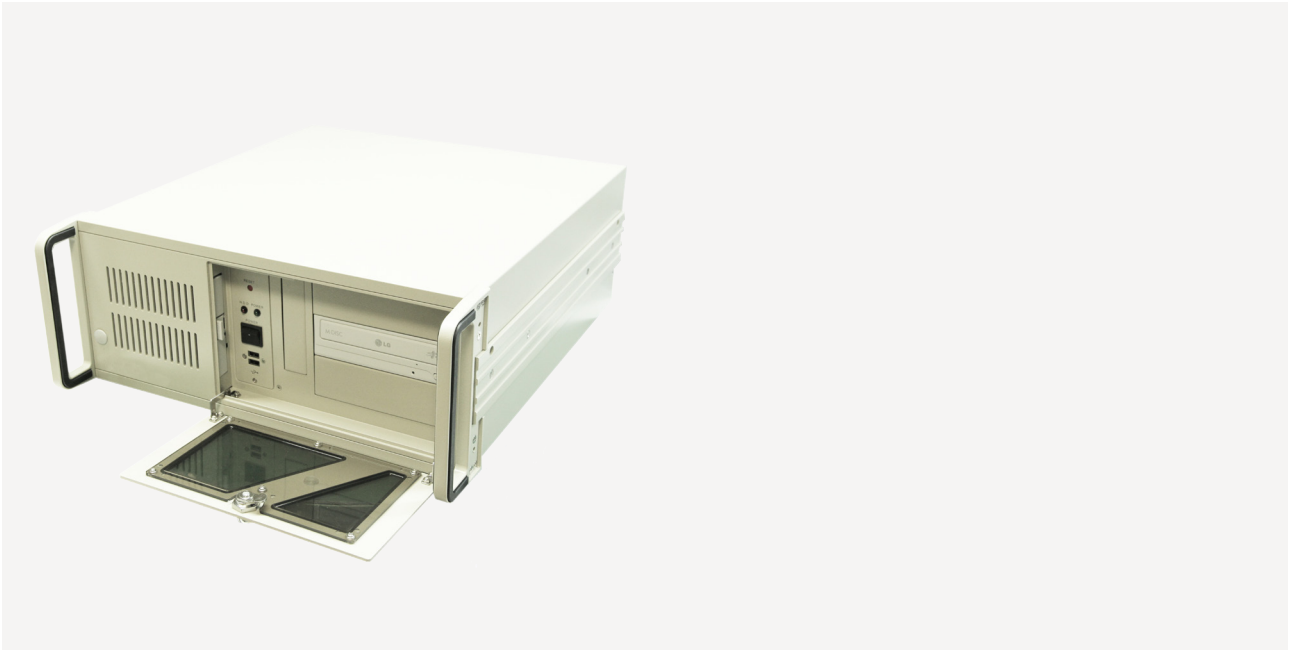


iROBO-40345-13P

Industrial Rackmount Computer



Features

- Rackmount Computer for industrial applications. The systems components is designed for continuous operation (24/7).

Specifications

CPU

- Intel® Core™ 4th Generation:
Intel® Core™ i7-4770S/4770 3.1GHz
Intel® Core™ i5-4570S/4570 2.9GHz
Intel® Core™ i3-4330 3.5GHz
- Supports Intel® 64 architecture

Memory

- 4x 240-pin SODIMM sockets
- Supports up to 32GB DDR3 1333/1600 unbuffered non-ECC

Chipset

- Intel® Q87

Graphic

- Integrated in CPU Intel® HD Graphics 4600
- Video ports: 1x DVI-I, 2x Display port v1.2
- DVI-I (VGA): resolution up to 1920x1200 @ 60Hz
- DP: resolution up to 3846x2160 @ 60Hz with Corei3/i5/i7

Ethernet

- Intel® i210AT Gigabit Ethernet Controller
- Intel® i217LM with iAMT9 Gigabit Ethernet Phy

Storage / Drive Bay

- 3x 5.25" open
- 1x 3.5" open / 1x3.5" hidden

RAID

- 6x SATA 3.0, Intel RAID Matrix Support RAID 0/1/5/10
- optional: Adaptec RAID Controller with 4-Ports

Expansion Slot

- 1x PCIe x16 Gen3
- 1x PCIe x8 Gen2 (el. 1 lane) 1x PCIe x16 (el. 4 lanes)
- 4x PCI 32bit/33MHz, Rev2.3

Front I/O

- 2x USB2.0

Rear I/O

- 1x DVI-I, 2x DP, 2x RJ45 LAN, 6x USB2.0, 2xUSB3.0
- 1x RS232, Audio, PS/2 KB/M

Other Internal Connectors

- 1x RS232, 1x LPT, 8-bit GPIO, 2x USB2.0, 1x USB 2.0 Stick Slot

Power Supply

- Power input: 100-240VAC 47-64Hz 400W

Cooling

- 1x 120mm, 1x 80mm Cooler

Mechanical

- Heavy Duty Cold Rolled Electroplated Steel
- Mounting: optional slide-rails
- Power / Reset Button in front

Dimensions

- Dimension (W x H x D mm): 483 x 177 x 450 mm
- Weight: 15 kg

Environment

- Operating Temperature: 0°C to 50°C
0°C to 40°C with add-on graphic adapter
- Storage Temperature: -20°C to 70°C
- Humidity: 10 ~ 90%, non-condensing

Certifications

- CE

Ordering Information iROBO-40345-13P/*