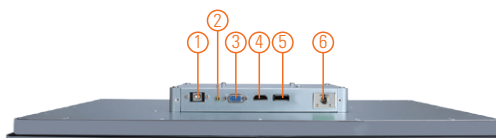
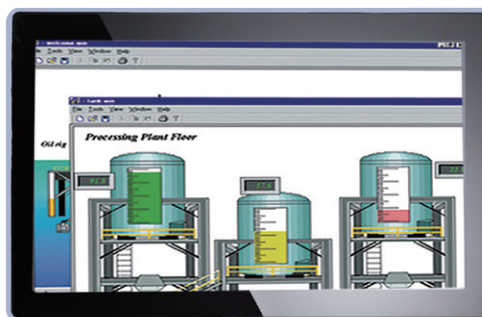


P6157W-V3

15.6" WXGA TFT Widescreen Industrial LCD Monitor

Features

- 15.6" WXGA TFT 400 nits LCD with projective capacitive multi-touch or resistive touch
- NEMA 4/12 (IP65) compliant flat panel monitor
- Supports panel mount, wall mount and VESA mount
- Full range screw-type (locked) AC-in or 24VDC in (optional)
- VGA, HDMI and DP with multi-signal inputs



1. USB for touch
2. Audio (Line-in)
3. VGA
4. HDMI
5. DP
6. Power input Terminal block or Screw type

Introduction

The P6157W-V3 is a slim-type industrial LCD monitor with flat front bezel design, which adopts 15.6-inch 400 nits WXGA LCD display and supports multi-signal interfaces including DP, VGA and HDMI. Featuring IP65 (NEMA 4)-rated front bezel, screw-type adaptor plug design, and 12/24V DC-in, the 15.6-inch P6157W-V3 is designed to fit for all kinds of industrial environments. Moreover, the P6157W-V3 supports panel mount, wall mount or VESA FPMPMI (Video Electronics Standards Association Flat Panel Monitor Physical Mounting Interface) mounting. With the compact mechanism design, the P6157W-V3 can be deployed easily in any space-limited place. It is especially suitable for POI/POS, HMI and all kinds of heavy-duty industrial fields.

Specifications

Front Bezel	NEMA 4/12 (IP65)-compliant, flat front bezel	
Mounting	Panel mount, wall mount and VESA arm FPMPMI mounting (video electronics standards association Flat Panel monitor physical mounting interface)	
LCD Panel	Display	15.6" WXGA TFT LCD
	Max. Resolution	1366 x 768
	Max. Colors	16.7 M
	Active Area (mm)	344.232 x 193.536
	Pixel Pitch (mm)	0.252 x 0.252
	Response Time	8 ms
	Backlight	LED
	Backlight MTBF	50,000 hrs
	Viewing Angle (H/V)	170°/160°
	Contrast Ratio	500 (TYP.)
Brightness (cd/m ²)	400 nits	
Display Control	OSD (on screen display)	
Input Signal	VGA	
	HDMI	
	DP	
	Touchscreen: USB interface	

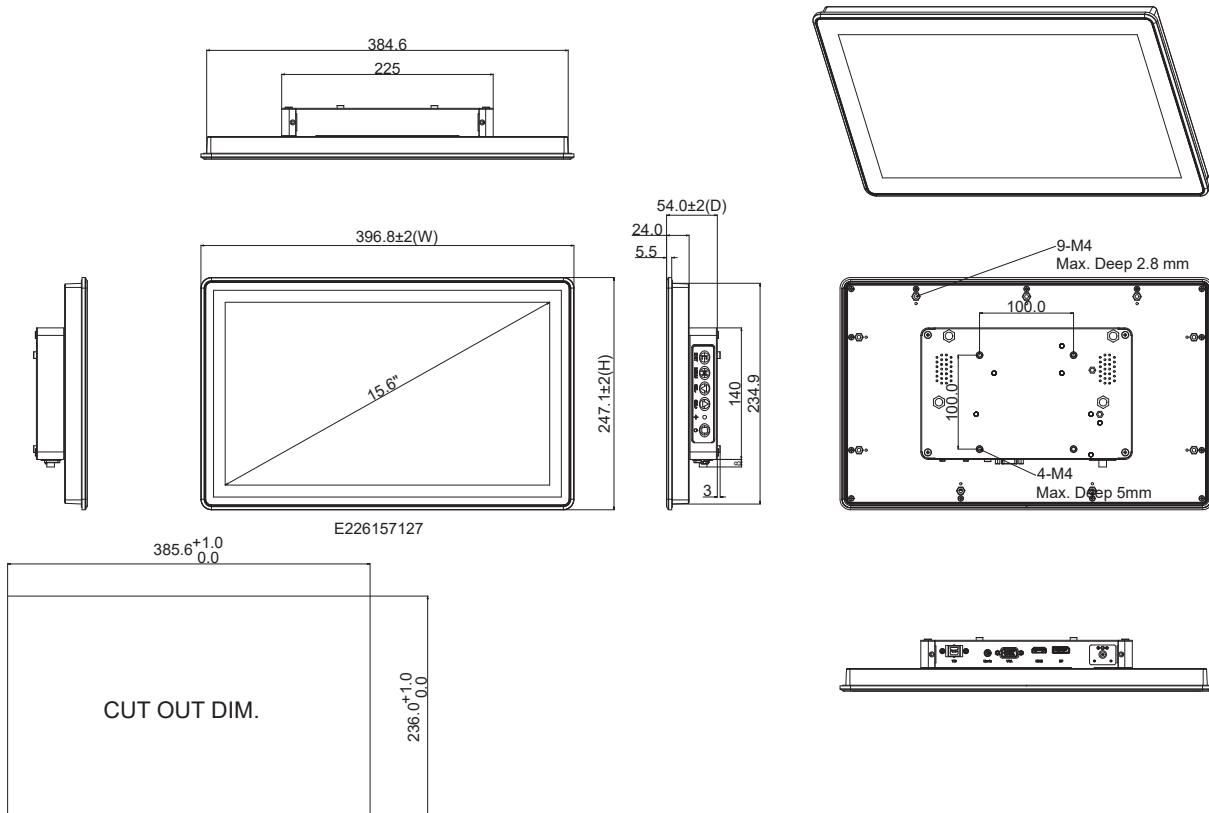
Specifications

I/O Connectors	1 x USB for touchscreen version 1 x Audio (Line-in) 1 x VGA 1 x DP 1 x HDMI 1 x Power input with screw type connector (AC version) 1 x Power input with terminal block (DC version)
Audio	2 x Speaker
Power Supply	AC version: 100 - 240 VAC-DC, 12V3A, 36W power adapter DC version: 24 VDC
Power Consumption	17W
Touchscreen	Projective capacitive multi-touch
Dimensions	396.8mm (15.62") (W) x 247.1mm (9.73") (H) x 54mm (2.13") (D)
Packing Dimensions	520 mm (20.47") (W) x 455 mm (17.92") (H) x 176 mm (6.93") (D)
Weight (net/gross)	4.1 kg (9.1 lb)/6.1 kg (13.44 lb)
Operating temperature	0°C to +50°C (+32°F to +122°F)
Relative humidity	10% to 90% @ +40°C, non-condensing
Certifications	CE

Packing List

1 x P6157W-V3 unit
1 x VGA cable
1 x USB cable for touch
1 x Audio cable
1 x Adapter (AC version only)
1 x 3-pin Terminal block (DC version only)

Dimensions



Ordering Information

P6157W-V3	
P6157WPC-AC-U-V3 (P/N: E226157127)	15.6" industrial monitor with capacitive touch screen, AC version
P6157WPC-DC-U-V3	15.6" industrial monitor with capacitive touch screen, DC version

* Other configuration by request

* Specification and certifications may vary based on different requirements

Optional Accessories

59902000030E	US 1.8M power cord
59904000050E	EK 1.83M power cord
59903000080E	EU 1.83M power cord
5946L203800E	HDMI cable
59461713900E	DP cable
881261570A0E	Panel mount kit
881231770A0E	Wall mount kit
E221177116	Desktop stand for 15.6" to 21.5"

1

2

3

4

5

6

7

8

9

Industrial Touch Monitors